

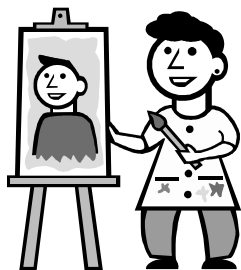
# The Well Crafted Word

Del Ray Artisans  
.....since 1992

[www.thedelrayartisans.org](http://www.thedelrayartisans.org)

December 2005

## A-Musing January show



January will transform the Del Ray Artisans Gallery into a place of inspiration as artists reveal their Muses to the world. Curators **Richard Wyvill** and **Karen Schmitz** are asking artists to open up and "Name Your Muse!" Be it a person, an animal, a memory, a book, a song, etc.

Wyvill and Schmitz are very excited to have Joe Kabriel as the juror for this first show of 2006, thanks to **Theresa Kulstad**. Kabriel is a distinguished Fine Arts Chair at the Montgomery College of Art and Design and a painting instructor with The Art League School.

Three Muse awards will be presented for outstanding works at the Friday, January 6<sup>th</sup> opening reception (7-10 PM).

Artists will have three dates to drop off up to 3 pieces of artwork at the DRA Gallery:

Sunday, Dec. 18 - 4-6 PM

Monday, Dec. 19 - 6-8 PM

Monday, Jan. 2 - 6-8 PM

Entry fee is \$10 DRA member/ \$15 for non-members. Muses, music and visual delights will rule the gallery January 6-29. Questions? Contact Richard Wyvill at 703.548.3940/ [richard@rfwyvill.com](mailto:richard@rfwyvill.com) or Karen Schmitz at [schmityk@yahoo.com](mailto:schmityk@yahoo.com)

## Is Figuring something you're interested in?

Del Ray Artisans will offer a 3-day, drop-in life drawing salon in early 2006! Presidents' Day weekend, Feb. 18-20, the gallery will host a marathon of drop-in life drawing sessions. Included will be both long and short poses.



Here's a chance for both members and non-members to explore or reconnect with the human figure. Both beginners and professionals are welcome. Look for next month's flyer in the WCW for more details, but reserve your spot now as we expect this to be well-attended!

In order to offer this exciting opportunity, volunteer support is needed. Members may exchange the studio fee for a 3-hour volunteer monitor shift. The gallery will be an "open studio" each day, so several shifts will need to be covered. This is an excellent opportunity to fulfill your volunteer hours early in the year while furthering your drawing skills in a communal atmosphere. Volunteers, and those interested in additional information, should contact **Joan Ulrich** at [ulrichclay@aol.com](mailto:ulrichclay@aol.com) or **Theresa Kulstad** at [tkulstad@verizon.net](mailto:tkulstad@verizon.net)

### DO YOUR HOLIDAY SHOPPING . . .

And support the **DEL RAY ARTISANS** while you shop!!!

*The Del Ray Artisans are participating in a Barnes & Noble BOOKFAIR*

**BARNES & NOBLE-POTOMAC YARD DECEMBER 9,10 & 11!**

see Page 2 and the enclosed vouchers for all the details

Contributors this month include: **Theresa Kulstad, Karen Schmitz, Susan Slattery, Kathryn Brown, Marlin Lord** and **Dave Nicholson**.

Many thanks to our monthly sponsor: **Royce Flowers** for the lovely arrangements seen at every opening

Thanks to the **Alexandria Commission for the Arts** for their continuing support.

Edited by: **Dave Nicholson**  
Submission deadline-20<sup>th</sup> of month preceding (12/20 for January)  
email to: [f8photog@yahoo.com](mailto:f8photog@yahoo.com)

Website: [www.thedelrayartisans.org](http://www.thedelrayartisans.org)

## DRA Website alert!

Have you been having trouble accessing the DRA website? Please change your bookmark or set your browser to:

**[www.thedelrayartisans.org](http://www.thedelrayartisans.org)**

Don't ask, just trust us on this one.

## Membership renewals

Don't forget! It's time for many of you to renew dues for 2006. Ask Santa to stop by the membership "gift certificate" table at the (Dec. 2-4) Holiday Market and treat you to a year's worth of art exhibits, events and fun!



## Eichers fund donation

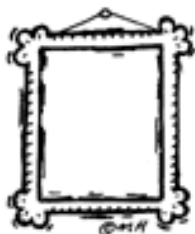
A very special thank you to **Ms. Harriet McGuire** for her \$250 donation to the Eichers Scholarship Fund. The money in this endowment is used to fund the annual scholarship that is awarded by the Del Ray Artisans to a graduating Alexandria high school senior.

In addition to the initial donation from the family of DRA member, Ted Eichers, and Ms. McGuire's donation there have been a number of anonymous donations over the past several years. You may wish to help us grow this endowment by making a year-end contribution now.

## Artists, here's another benefit of membership

Artifacts Framing is now offering an ongoing Del Ray Artisan member benefit of 15% off all custom frame jobs!

Both Thilys and Stephany are local artists with over 20 years experience in custom framing, art, and decorating. So stop by Artifacts and get your work framed today while enjoying yet another valuable benefit of being a DRA member.



Thank you Artifacts! Owners **Stephany White** and **Thilys Araujo** would also like for members to know that they currently have 20+ "great" frames on sale, priced from \$3 to \$20 in styles ranging from modern to traditional. Stephany suggests the frames are "good for artists needing an inexpensive solution to framing."

Artifacts is located at 201-A East Custis Avenue and is open 6 days week.  
703.519.1711 [www.artifactsframing.com](http://www.artifactsframing.com).

## Visit Barnes & Noble, buy stuff, benefit DRA

Barnes & Noble-Potomac Yard will donate 15-25% of all in-store sales during the 3-day period of Friday-Sunday, December 9-11, 2005, to the Del Ray Artisans when customers present a vouchers when making their purchase! Mark your calendars now!. This is a fun way to support your arts group while finding books, CDs & DVD gifts for everyone on your holiday list.

word, distribute vouchers & shop 'til you drop at Barnes & Noble-Potomac Yard.  
3651 Jefferson Davis Hwy., (Route 1)  
Alexandria, 703.299.9124  
Store hours: 9 AM-11 PM everyday

There are a few rules & limitations for the Bookfair, so please review carefully:

- Voucher must be presented at the time of purchase during the 3-day Bookfair period.
- We cannot distribute vouchers inside or directly outside Barnes & Noble.
- Barnes & Noble members may use their cards to make (discounted) purchases.
- All Barnes & Noble merchandise & all forms of payment are eligible for the Bookfair.
- The following transactions are NOT included in the Bookfair:
  - purchase of gift cards
  - purchase of B&N memberships
  - purchase of Café consumables

It's easy! We have provided 4 Bookfair Vouchers in this Newsletter. Keep one for yourself and distribute the rest to your family, friends & co-workers. Make additional copies or go to [www.thedelrayartisans.org](http://www.thedelrayartisans.org) for vouchers. Even easier-send a link to our website to everyone on your email list! Vouchers can be used multiple times during the 3-day Bookfair period.

Many thanks to Barnes & Noble for this great fundraising opportunity. We look forward to participating again-so it's now up to you, our members, to spread the



## 2006 Calendar of Events

January 10	Board Meeting 7:00 PM
January 6-29	<i>Name Your Muse</i> Juried, curator <b>Richard Wyvill</b> 703.548.3940
January 22 & 29	♥ <i>Card making Party</i> noon-4:00 PM <b>Theresa Kulstad</b> 703.914.1517
February 3-5	<i>Cupid</i> ♥ event <b>T. Kulstad, J. Branson, J. Ulrich</b> (Fri. 7-10 PM, Sat/Sun. 12-5 PM)
February 14	Board Meeting 7:00 PM
February 11-26	Art workshops
February 18-20	Life Drawing drop-in sessions
February 21	DRA General Meeting & Artist Swap Meet 7:30 PM
March 3-26	<i>Mi Casa, Su Casa</i> -Springwater Fiber Collaboration Juried, co-curators: <b>Randy Scheessele</b> 703.535.6510 & <b>Linda Silk</b> 703.533.7689
March 14	Board Meeting 7:00 PM
March 20	Del Ray Citizens Association <i>Meet 'n Greet</i>
Mar. 31-April 23	<i>Spring All Member Show</i>
April 11	Board Meeting 7:00 PM
April 21	<i>12<sup>th</sup> Night Toga Party &amp; Dance</i> <b>Karen Schmitz/Susan Slattery</b>
April 28-30	<i>Master's Thesis exhibit</i> <b>Leslie Rousseau</b> 703.461.0631
May 4	1 <sup>st</sup> Thurs. Preview of <i>exhibit</i> 6-9 PM
May 12-28	<i>Student Art Show</i> , organizer <b>Linda Silk</b>
May 9	Board Meeting 7:00 PM
May 13	<i>Spring Arts &amp; Crafts Show &amp; Sale</i> , organizer <b>Rob Rudick</b> 301.270.2323
May 16	DRA General Meeting 7:30 PM
June 1	1 <sup>st</sup> Thurs. Preview of <i>Abstract Art exhibit</i> 6-9 PM
June 9–July 16	<i>Abstract Art / Juried</i> , curator <b>Laurel Lukaszewski</b> 703.837.0543
June 13	Board Meeting 7:00 PM
July 6	1 <sup>st</sup> Thurs. Choreographers Collaborative Project performances 6-9 PM
July 11	Board Meeting 7:00 PM
July 24–28	<i>Art Camp</i> <b>Theresa Kulstad/Linda Silk</b>
August 3	1 <sup>st</sup> Thurs. Preview of <i>exhibit</i> 6-9 PM
August 4 -27	<i>3 Artist show</i> , <b>Lukacs, Kulstad &amp; Silk</b>
August 8	Board Meeting 7:00 PM
August 15	<i>DRA Pool Party</i> 6:00 PM General Meeting & Pie Baking contest
September 7	1 <sup>st</sup> Thurs. Preview of <i>Fall All Member Show</i> 6-9 PM
Sept. 8–Oct. 1	<i>Fall All Member Show</i>
September 9-10	<i>Alexandria Festival of the Arts</i>
Sept. 12	Board Meeting 7:00 PM
October 7	<i>Art on the Avenue</i> 10 AM-6 PM, Dance & art activities in the gallery
October 6-29	<i>Bead II / Juried</i> , curator <b>Barbara Brecher</b> 703.548.2878
October 10	Board Meeting 7:00 PM
October 17	DRA Annual Meeting & Elections 7:30 PM
October 27-Nov. 4	<i>Dia de los Muertos</i> workshops /event /exhibit
October 29	<i>Del Ray Halloween Parade</i> 2 PM
November 3–26	<i>DR Dozen</i> Photography Invitational exhibit, curator <b>Rob Rudick</b> 301.270.2323
November 14	Board Meeting 7:00 PM
November	Photography workshop
December 1-3	<i>Fine Art &amp; Fine Crafts Holiday Market</i>
December 2	Holiday on the Avenue - Tree Lighting & Luminaria Display 6:00 PM
December 12	Board Meeting 7:00 PM
December	Cookie Swap / Ornament workshop



**Executive Board**

*President*

*Susan Downs Slattery*  
703.922.7290 /summerh@erols.com

*Vice-President*

*Laurel Lukaszewski*  
703.837.0543 / laurelst@hotmail.com

*Secretary*

*Linda Elliff*  
703.360.1265 / lleliff@aol.com

*Treasurer*

*Marlin Lord*  
703.683.1112 / mglai@aol.com

*Assistant Treasurer*

*Kathryn Brown*  
703.549.5227 / neonkanb@aol.com

**Directors**

*Communications*

*Dave Nicholson*  
703.578.6471 /f8photog@yahoo.com

*Facility*

*Karen Schmitz*  
703.317.9340 /schmityk@yahoo.com

*Fundraising*

*Juli Branson*  
703.693.4263 / jrbranson@hotmail.com

*Gallery Coordinator - OPEN*

*Historian/Archivist*

*Charlotte Corcoran*  
703.548.1521 / corcorandesign@verizon.net

*Membership Co-Directors*

*Catherine Bott*  
703.820.8344 / cb5800@yahoo.com  
*Courtney Brownwell*  
703.820.3781 / clbrownwell@yahoo.com

*Curator Coordinator - OPEN*

*Outreach*

*Linda Silk*  
703.533.7689 /lmsilk@worldnet.att.net

*Programs Co-Directors*

*Theresa Kulstad*  
703.914.1517 / tkulstad@verizon.net

*Joan Ulrich*

703.683.3620 / ulrichclay@aol.com

*Volunteers*

*Vivienne Lukacs*  
703.979.8996 /viv703@msn.com  
*Community Representative - OPEN*

**Amazing help!**

Considerable hat-tipping to all who volunteered this year to help with the Adopt-a-Park clean-up efforts.

As we judge it, DRA only lost 3 points for the entire season. A remarkable accomplishment from everyone.

Special recognition goes to **Peggy Ashbrook** who did an utterly amazing 12 weekends of pickup. If you see Peggy please give her your heartfelt thanks as DRA certainly appreciates and thanks her for her unselfish commitment to Avenue beautification...and DRA.

**Join DRA as an artist or supporter**

Renewal <input type="checkbox"/>		New Member <input type="checkbox"/>
<b>MEMBERSHIP FORM</b>		
Title _____	Name(s) _____	
Corporation Name _____		
Address _____		
Home Phone _____	Work Phone _____	Email _____
Artist <input type="checkbox"/>	Media <input type="checkbox"/>	
<p><b>Unless contributing as a Corporate entity or Friend of DRA, I understand that as a DRA member I will contribute a minimum of 10 volunteer hours annually. These are hours non-related to the requirements of an exhibiting artist in a DRA show, as all exhibit participants are required to gallery sit or assist with other aspects of an exhibit in which they participate. Please indicate below your areas of interest:</b></p> <p><b>COMMUNICATIONS:</b> Mailings__ Newsletter__ Public Relations__ ; <b>FACILITY:</b> Gallery Maintenance __ Gardening __ ; <b>FINANCE:</b> Grants __ ; <b>FUNDRAISING:</b> Solicitation __ Special Events __ ; <b>GALLERY COORDINATOR:</b> Curating/Co-curating __ Hanging Shows __ ; <b>HISTORIAN/ARCHIVIST:</b> Photograph Albums/Scrapbooks __ ; <b>MEMBERSHIP:</b> Data Input __ Sponsor/Corporate Solicitation __ ; <b>OUTREACH:</b> Community Events/Activities __ ; <b>PROGRAMS:</b> Art Camp __ Class Instructor __ ; Member Events __ ; <b>VOLUNTEER:</b> Telephoning __ ; <b>JUST ABOUT ANYTHING</b> __</p>		
Signature _____		Date _____
<p><b>Dues:</b> Gold Corporate \$500 __ ; Silver Corporate \$250 __ ; Friend of DRA \$35 __ ; Individual \$35 __ ; Household \$50 __ ; Student/Senior/Disabled \$10 __ . Dues payable to <b>DEL RAY ARTISANS</b> and mail with this form to Del Ray Artisans, Attn.: Membership, 2210 Mt. Vernon Avenue, Alexandria, VA 22301.</p>		

**DEL RAY ARTISANS**  
**GALLERY LOCATION : 2704 MT VERNON AVE.**  
**MAIL: 2210 MT. VERNON AVE.**  
**ALEXANDRIA VIRGINIA 22301**  
**PH: 703.838.4827**